

**Blind Pass Restoration
Weekly Progress Report
April 12th thru April 18th, 2009**

	Contractor: Energy Resources Inc.		
Original Contract Time:	220 days	Time Remaining:	81 days
Estimated Volume:	152,683 cyds	Volume Placed:	98,016 cyds
Required Production Rate:	675 cyds/day	Avg. Production Rate:	731 cyds/day

The following tasks were completed during the weeks of April 12th thru April 18th:

- The Contractor dredged an estimated 2,237 cubic yards during the reporting period. Work efficiency was approximately 24%. The efficiency for the project to date is 46%. Efficiency is calculated as the ratio of total dredging time to total work time.
- The Contractor began hauling non-beach compatible material for upland disposal on Tuesday, April 14th. Approximately 12,000 yards will be removed.
- The Contractor began dredging operations under Blind Pass Bridge on Thursday, April 16th. Dredge 'Michael' was disassembled in part to fit underneath the bridge.
- Due to inclement wind and wave conditions, Dredge 'Nate' did not conduct operations from Sunday, April 12th to Saturday, April 18th.

The following tasks are anticipated during the week of April 12th thru April 18th:

- The Contractor is expected to begin removing the steel sheet pile walls of the containment cell by Wednesday, April 22nd. The wall closest to Blind Pass Bridge will be removed first to allow access into the cell for material removal. Dredging by the bridge may be suspended during this work to allow placement of alternate heavy equipment such as a crane and excavator.
- Dredge 'Nate' is not anticipated to work in the Gulf until at least Friday, April 17th due to expected wind conditions.
- Lee County began daily sea turtle monitoring on Wednesday, April 15th. The monitoring is required by State and Federal permits.

Outstanding and other Items to Note:

- The Contractor is still investigating the addition of equipment to aid the removal of small sized cemented shell, asphalt, and concrete from the dredge material. Resolution is anticipated prior to May 1.
- The Contractor is expected to begin operations as early as 4:00 am unit midnight for the remainder of the project. The Contractor is authorized to work on a 24-hr. per day basis, 7 days a week.
- Truck hauling of the clayey material for upland disposal is expected to last until the end of the month. Approximately 70 trucks per day are making the 1.2 mile trip (1 way) to the disposal site, hauling approximately 1,000 cyds per day.



Thursday, April 16, 2009
Dredging Underneath Blind Pass
Bridge



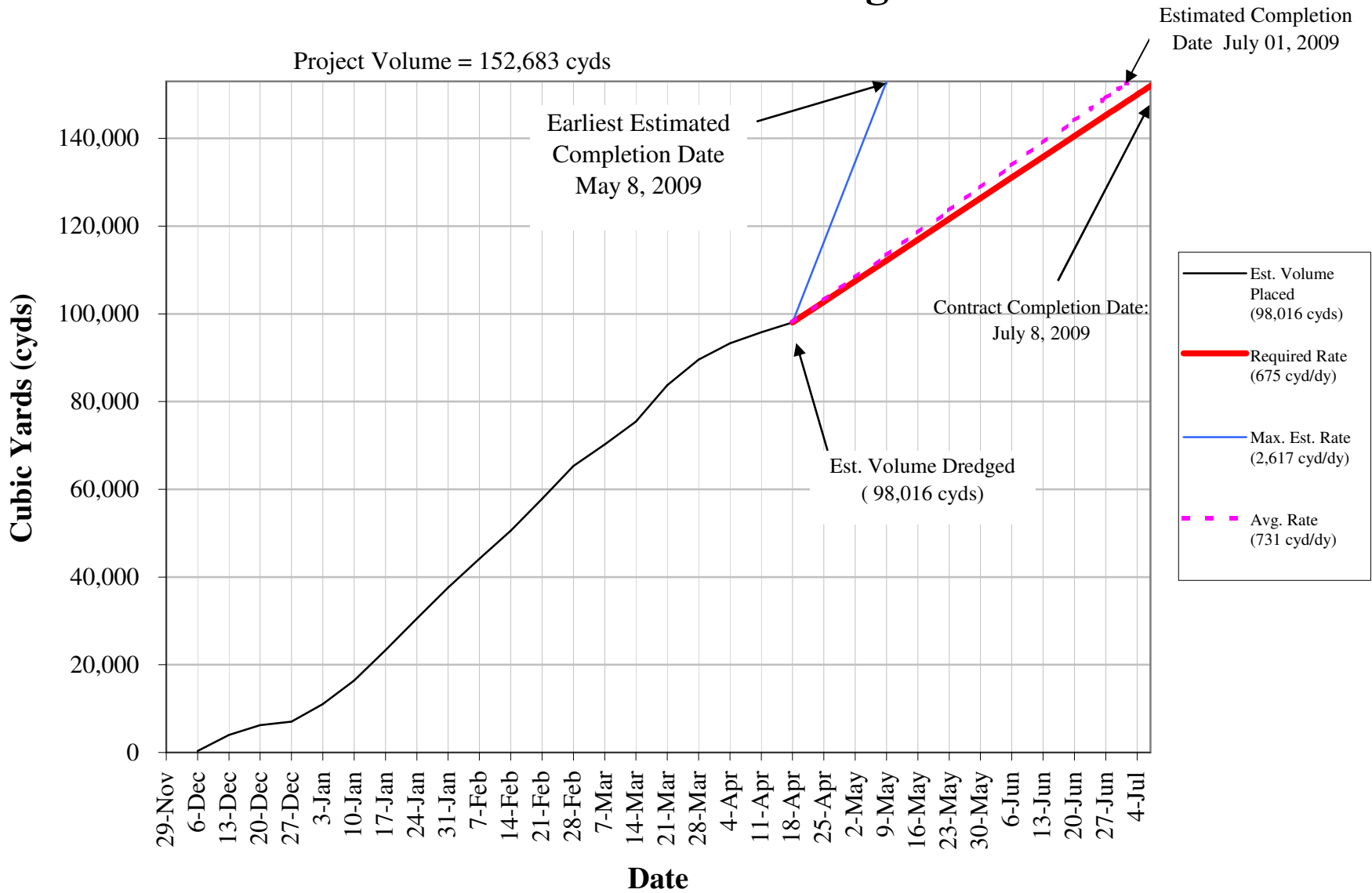
Wednesday, April 15, 2009
Material to be Truck Hauled to a
Disposal Location.

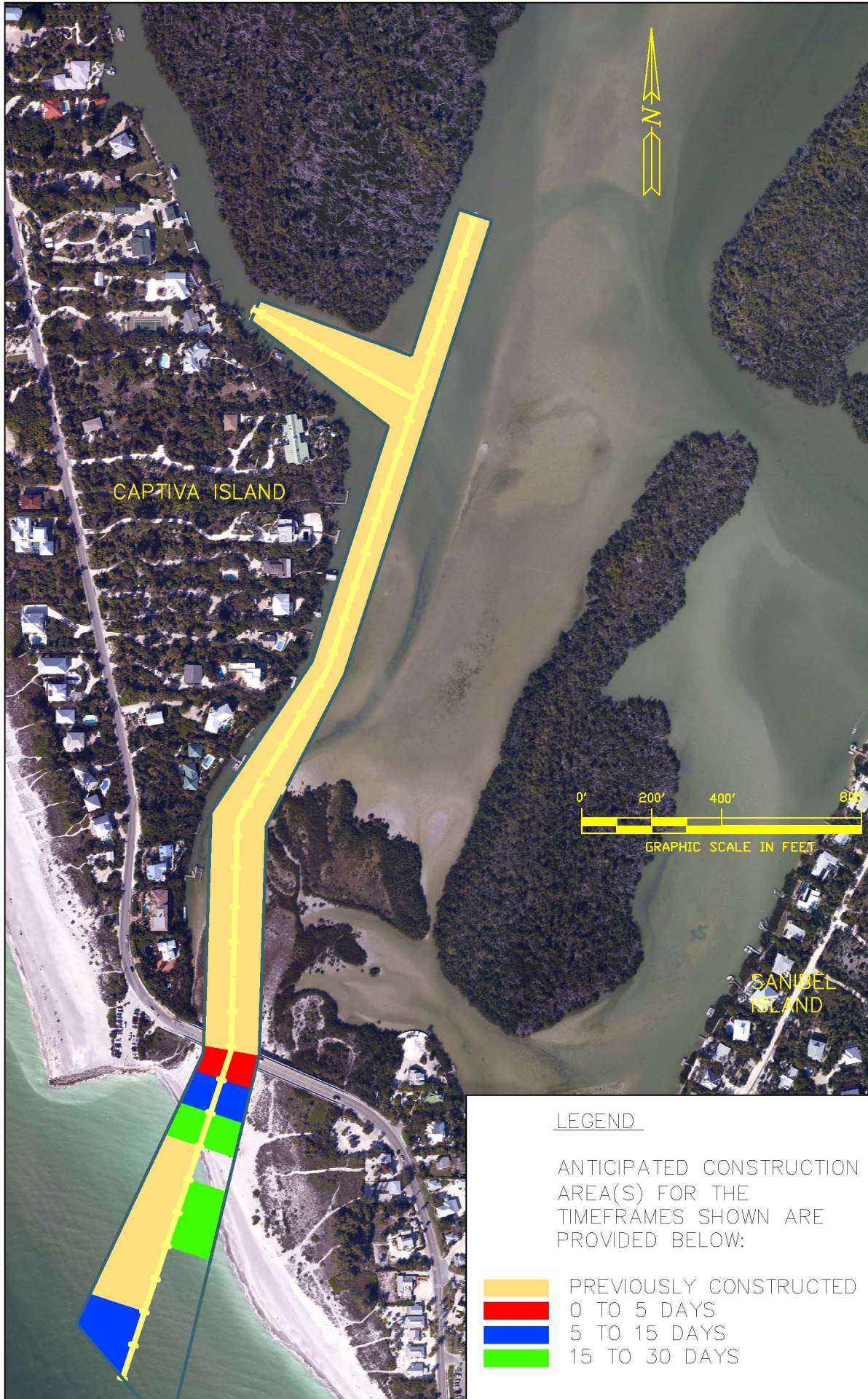


Friday, April 10, 2009
The Upland Disposal Site for
Material Unsuitable for Beach
Placement (1 of 3 Ponds)

Blind Pass Maintenance Dredging Production Tracking

Project Volume = 152,683 cyds





TITLE:
 BLIND PASS MAINTENANCE DREDGING
 CONSTRUCTION SCHEDULE
 WEEK OF APRIL 20, 2009

NATURAL RESOURCES DIV
 1500 Monroe St. Fort Myers, Florida 33901
 Ph. (239) 533-8109/10 Fax. (239) 485-8408

LEE COUNTY
 SOUTH WEST FLORIDA

FILE: S:\NATRES\MARINE\BEACHMANAGEMENT\
 BLINDPASS\DRAWINGS\BLINDPASS_
 CONSTRUCTION.dwg
 DATE: 17-NOV-08
 DRAWN: RBN
 APPROVED: RBN

LEGEND

ANTICIPATED CONSTRUCTION
 AREA(S) FOR THE
 TIMEFRAMES SHOWN ARE
 PROVIDED BELOW:

- PREVIOUSLY CONSTRUCTED
- 0 TO 5 DAYS
- 5 TO 15 DAYS
- 15 TO 30 DAYS

SCALE:
 1" = 400'

SHEET:
 01 OF 01